

Rail Data Marketplace

Welcome to your round up of news related to the Rail Data Marketplace (RDM). If at any time you wish to unsubscribe, email us at raildatamarketplace@raildeliverygroup.com.

In this edition

- RDM highlights
- Support availability: 25 December to 1 January
- Guidance
- Multiple documentation links
- The Origin Destination Matrix (ODM)
- List of new data products on the RDM

RDM highlights

Here we are approaching Christmas once again! Where did 2024 go? It has been a busy one for sure, with the Rail Data Marketplace serving 56 million API calls, 2.5 Tb of pub/sub data and facilitating 12,000 file downloads.... and hopefully we converted a few more sceptics of the project along the way.

We sincerely hope that it is a year in which you have found increasing value from RDM. If your answer to that is Yes, then it will certainly make us all happy, but if your answer is No, then please do get in touch to tell us what you would like us to deliver for you in 2025. Our recent survey was even less popular than Brussels sprouts, and without user feedback we are going on guesswork. We are genuinely interested to hear how you would like us to develop RDM over the coming months which you can do via the Feedback link on the site.

To slightly contradict myself, one of our regular critical friends did give us some good feedback recently, and as a result we are improving the guidance around permissions settings in your cloud storage to allow the download of data to an AWS or GCP bucket. For those who were unaware of that functionality, more can be found here:

- [How to access file data and automate transfers](#)

We will also be expanding that list of recipient cloud solutions to include Azure Blob in the next week.

Whilst the whole team are committed to continuous improvement, there was something of a backlash amongst the team when I suggested cancelling Christmas, so sadly, we will be reducing our service provision whilst the festivities are on. Details of that are below. Rest assured however, that the RDM platform is monitored and supported 24*7*365, so APIs can still be called throughout the break.

In December, RSSB has published the very popular Origin Destination Matrix data for 23/24, which has already been used to generate some fascinating insights by Richard Rowson and Will Deakin which you can find out more about below.

One area that we have been working on recently, and which we hope to improve further in 2025, is the information available to Publishers. The articles below give details of how Publishers can understand the data sharing agreements that they are party to and also the usage of data products. In 2025, we hope to be able to offer regular reporting to Publishers to give a dashboard of usage. More news on that next year.

We will end by wishing all of you a very happy Christmas and hope that you have a relaxing and restful break with friends and family. We look forward to being able to share more news (and more importantly rail data!) in the New Year.

Support availability: 25 December to 1 January

The RDM Support Team is here to help over the festive period. We’re providing a reduced support service from Wednesday 25 December 2024 to Wednesday 1 January 2025.

Our service desk continues to be open and ongoing support is available, but it may take us longer than usual to reply. During this time, the core RDM platform continues to receive 24/7 monitoring and support.

If any issues occur, our priority is to respond to any urgent issues that impact multiple users. We’ll continue to address less urgent, isolated issues based on their priority.

We aim to respond to:

- urgent issues within 1 day
- non-urgent issues within 5 business days
- emails within 5 business days

New consumer registrations, publisher level access requests, subscription approvals and any other data requests will be handled on our return to full service on Thursday 2 January 2025.

You may be able to find the information you need in one of [our guides](#). If you do need assistance, please raise a support request in the normal way by [contacting RDM Support](#). If you’re a registered user, you can sign in for additional support options.

Thank you for your patience while we manage requests during this time.

Guidance

The following guides offer step-by-step instructions to help you view and manage your contracts. As a data publisher, you can see who is subscribed to your data products and track the status of each contract. As a data consumer, you can view the contracts between your organisation and the publishers of the data products you've subscribed to.

Data publishers can also access overall usage statistics for their data products, along with detailed usage data for individual products and users. Read our guides for more information:

- [How to manage contracts \(data sharing agreements\)](#)
- [How to see usage statistics for your data products](#)

Multiple documentation links

In response to user feedback, data publishers can now include multiple documentation links when publishing a data product. To add additional links, navigate to the Documentation page while creating or editing a product. Use the Name field to describe each documentation link. You can use the Add button to include as many URLs as necessary. These will show on the documentation tab for your product.

Name

URL

Name

https://example.com

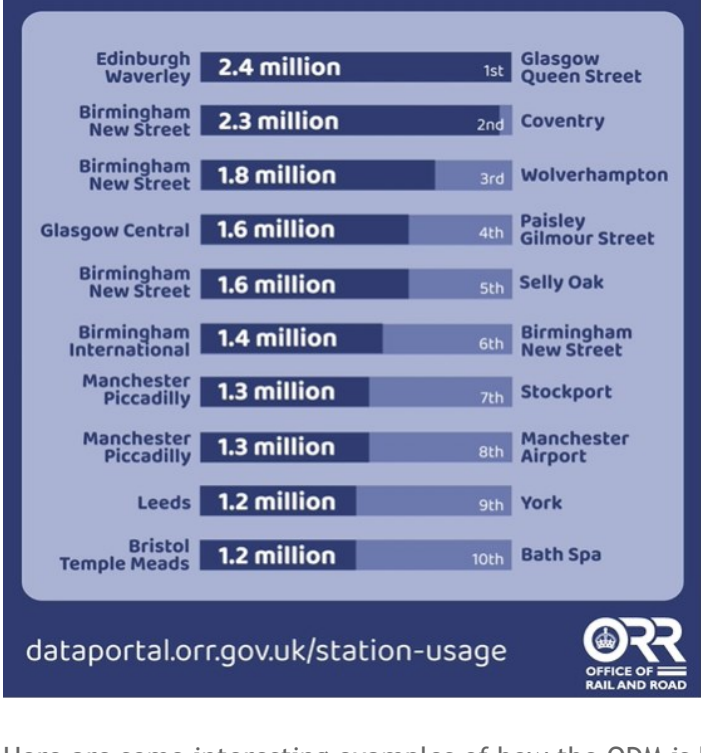
Add

The Origin Destination Matrix (ODM)

[The Origin Destination Matrix 2023-24](#) is now available on the Rail Data Marketplace.

The ODM is a comprehensive matrix of rail passenger flows throughout Great Britain. A flow represents all journeys, in both directions, between a pair of stations. In 2023-24, the busiest flow in Great Britain was between London Liverpool Street and Tottenham Court Road, with 8.2 million journeys. Six of the ten busiest flows were on routes only served by the Elizabeth line.

The busiest flow outside of London (i.e. excluding London stations) was between Edinburgh Waverley and Glasgow Queen Street (2.4 million journeys) followed by Edinburgh Waverley and Birmingham New Street (2.3 million journeys). The busiest flow to include a station in Wales was the 1.1 million journeys between Cardiff Central and Newport.



Here are some interesting examples of how the ODM is being used by the data community:

- https://www.linkedin.com/posts/will-deakin-538729_datavisualisation-orr-passengerdata-activity-7268377358066233346-Q9mf
- [Rail ODM analysis 2023-24 | Tableau Public](#)

List of new data products on the RDM

Organisations	Data Product
Rail Delivery Group	Live Arrival Board
Rail Delivery Group	Live Next Departure Board
Rail Delivery Group	Live Arrival and Departure Boards
Rail Delivery Group	Live Fastest Departures Board
Network Rail	NWR Virtual Railway Sample CAD Model
Network Rail	NWR Environmental Incidents
Network Rail	NWR Freedom Of Information Disclosure List
South Western Railway	South Western Railway Long Term Plan
Trenitalia C2C	Live Train Formation & Capacity
Trenitalia C2C	c2c Passenger Loadings
London Northeastern Railway	LNER - Social Media Times - Last 180 Days - 2024
London North Eastern Railway	LNER - Core Complaints Data - Period 7, 2025
Great Western Railway	Train Formation and Capacity Data
Office of Rail and Road	Origin and destination matrix (ODM) 2023-24
West Midlands Trains	WMT Fleet Accessibility Data
Avanti West Coast	Train Plan December 2024
Greater Anglia	Energy and Environmental Data 2023 -24